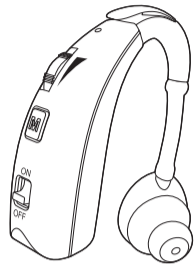
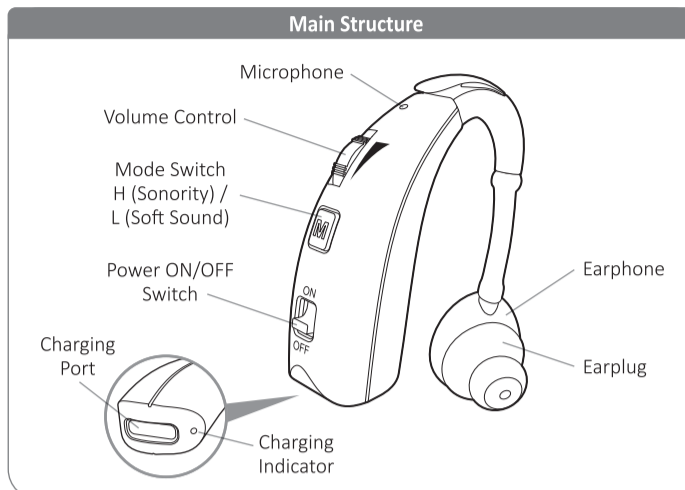


## VHP-1301/1303 Digital Rechargeable Hearing Amplifier



Thank you for choosing VHP-1301/1303 Hearing Amplifier, it will be greatly satisfied to you by its small size and low distortion. If you have any questions, you can ask the local vendors, they will be happy to help you, or directly ask our factory technical service department. Please read the manual carefully before using, under the guidance of a doctor.

### Operation Instructions

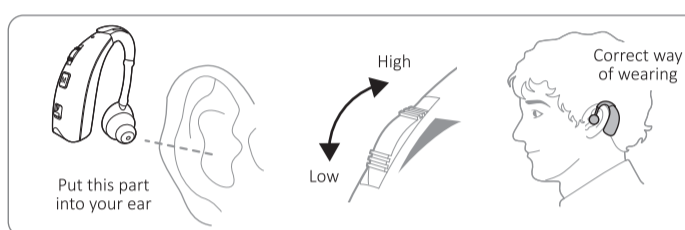


### Technical Data

MODEL	ITEM	UNIT	PARAMETER INDEX	
			VALUE	TOLERATE
VHP-1301 VHP-1303	Size	mm	37 x 18.5 x 10.2	
	Weight	g	6	
	Working Voltage	V	DC 3.7V	+5%,-10%
	Working Current	mA	≤ 1.5	
	Frequency Response	Hz	280- 3200	
	Maximum Saturation Acoustic Output	dB	≤ 128	+ 3dB
	Hi-frequency average value	dB	117	± 4dB
	Full-on Acoustic Gain	dB	34	± 5dB
	Total Harmonic Distortion	%	≤ 7	+ 3%
Equivalent Input Noise	dB	≤ 29	+ 3dB	

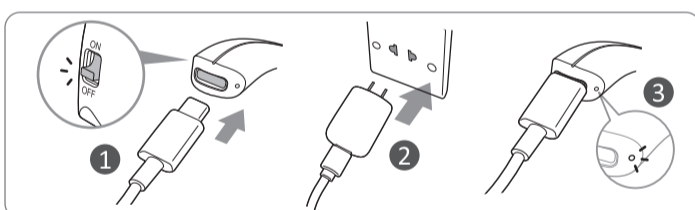
Device Safety Level Inner Power Level: B

### Operation Steps



1. Choose the best size of dome for your ear, please change the dome as the figure if needed.
2. Turn the volume to low level before using it.
3. Put the product into the ear as shown on figure.
4. Power ON the Hearing Amplifier.
5. Choose the Mode for the most comfortable usage.
  - High Tone Mode (Sonority)
  - Low Tone Mode (Soft Sound)
6. Regulate the volume to a proper level slowly.
7. Be sure to switch off after use to save power.
8. Charge it for next use if needed.

### Charging Instruction



1. Turn the power switch to the "OFF" position before charging. Insert the micro USB head into the charging port. Please pay attention to the direction of the charging port and the micro USB head, it will damage them if insert in the opposite direction. (Fig.1)
2. Plug the adapter into a power outlet. (Fig.2)
3. Blue light indicates the device is charging while green indicates the device is fully charged. It takes around 1.5 hours for full-charge. (Fig.3)
4. If you charge the device without turning it OFF, a red light will blink indicating the device will be powered OFF and won't charge.
5. Please charging it in time to avoid affecting the battery performance and battery life.

6. It's forbidden to let the product connect to 110V-220V~50-60Hz AC outlet directly.
7. Please pull the plug when any abnormalities occurred during the charging process. (such as odor, fever, deformation)
8. The built-in battery capacity is greater than or equal to 60% of rated capacity after 300 cycles of charge and discharge.
9. Please use the required adapter to charge to prevent safety issue, its parameters is

INPUT: 100V~240V, AC 50/60Hz, 0.2-0.25A  
OUTPUT: 5V  $\overline{=}$  1A

as provide in the package.

### Attention

1. This product is not waterproof, therefore the user must take care to prevent water from entering the product. If water enter the product, place the product in a warm place to dry.
2. Use it only when situations require amplification of sounds, such as movies, television and the like. it can't enlarge the extremely sounds.
3. Turn product to the OFF position when not use for a long time.
4. Do not use in or near an X ray or MRI machine.
5. **Please charge this product every 3 months even you are not using it, otherwise the product may not working since the battery will not active.**

### Warning

It is important to increase the volume control very gradually to avoid sudden increase in sound.

Children can't use this product. If you have any problem, please consult otologists.

**The adapter provided in the package is only for charging this amplifier, please do not use it to charge other devices especially cellphones.**

### Storage

Store in a dry place with good ventilation and related humidity no higher than 80%, and free of corrosive gas.

### Troubleshooting

Problem	Possible Solution
Sound is distorted	Decrease volume. Charge the product. Clean the dome.
Sound is weak	Charge the product. Increase volume. Replace microphone. Check the dome whether blocked or not.
The product emits whistling sounds	Reinsert the dome until it fits securely. Decrease volume. Clean the dome.
The product does not work	Change to different size of dome. Charge the product. Check whether the microphone is damaged or not.

Consult your Hearing Care Professional or directly contact to us if you encounter further problems.

### Label

- ON — Turn ON
- OFF — Turn OFF
- M — Mode Select
- ▲ — Volume control

All pictures are for reference only